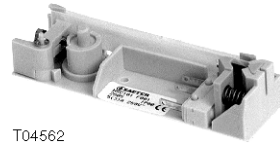


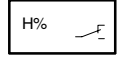
HSC 101: Build-in humidistat

To control or monitor the relative humidity. Suitable for humidifying or dehumidifying e.g. window ventilators, air condition units or air-driers. Suitable for panel-mounted applications of protection class II.

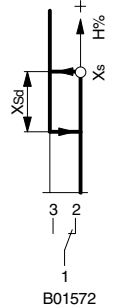
Base plate made of thermoplast. Adjusting shaft (D-shape) for the upper switching point. Fixed switching difference. Sensing element made of stabilised synthetic textile band. Microswitch with single-pole change-over contact. Mounting by one screw-hole and one blind-hole for fixation. Electrical connection by AMP-plugs 2.8 mm.



T04562



Y02341



B01572

Type	Setting range %rh	Switching difference %rh	Weight kg
HSC 101 F001	25...95	6	0.03
Contact rating minimum	5 (3) A, 250 V~ 100 mA, 24 V	Permissible ambient temp. ²⁾	0...40 °C
Time constant (v = 0.2 m/s)	approx. 3 min	Degree of protection ³⁾	IP 00 (EN 60529)
Setting accuracy ¹⁾	± 5 %rh	Protection class ³⁾	0 (IEC 536)
Temperature influence	+0.5 %rh/K	Wiring diagram	A01500
Humidity calibrated at	55 %rh, 23 °C	Dimension drawing	M02468
Long-term stability	-1.5 %rh/a	Fitting instructions	MV 505361

- 1) Substantial improvement possible by readjustment in the field
- 2) Temperatures below freezing point (max. -30 °C) are acceptable as long no dewing occurs
- 3) The corresponding electrical regulations must be fulfilled by the manner of built in.

Operation

When increasing relative humidity reaches the set value X_S , the single-pole change-over contact is actuated (contact 1-2 is opened and 1-3 is closed). The set value corresponds to the upper switching point. The contact position is reversed as soon as the humidity falls below the lower switching point ($X_S - X_{Sd}$)

Ambient temperatures others than the calibration temperature result in a systematical but non-permanent setpoint shift (Temperature influence). See technical appendix: effect of temperature influence.

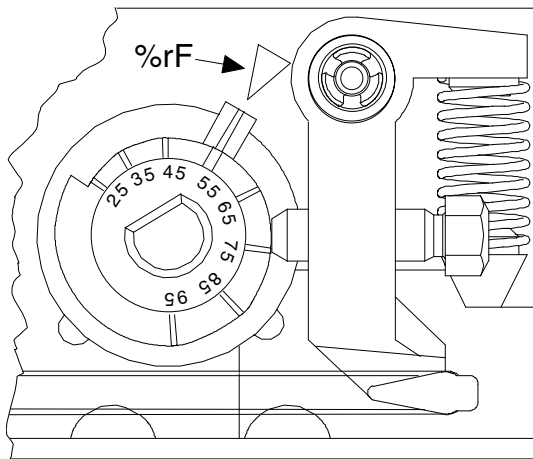
Furthermore, a systematical but none-permanent error may be induced by rapid change of humidity because of the time constant. See technical appendix: effect of time constant.

Engineering and fitting notes

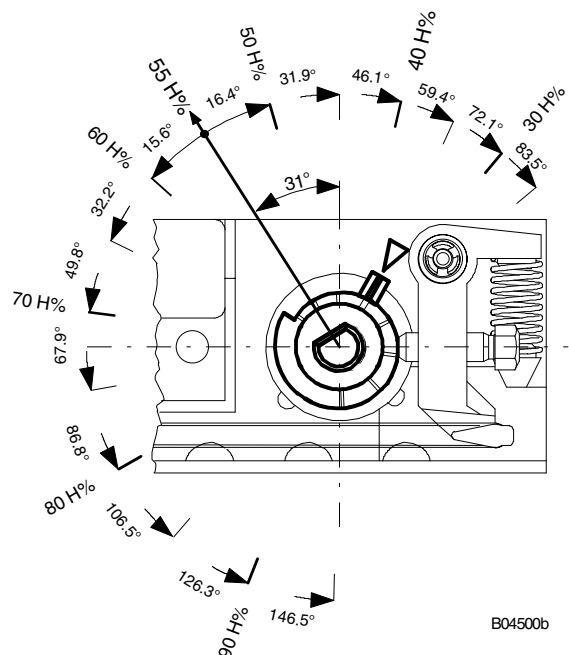
Fitting: Open switching element for fitting into either a housing or a device. In compliance with the safety standards, the electrical safety measures must be fulfilled by fitting accordingly. Around the band bearing, the basic insulation meets the required standards.

Scale: Scale marks without numbers on the setting spindle. Marking arrow on the baseplate. The scale marks are explained in the diagram below left.

The information regarding the printing of either a housing or a front plate can be taken from the diagram below right. The angles refer to the reference position (55 %rh) of the setting spindle.

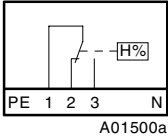


B04499a

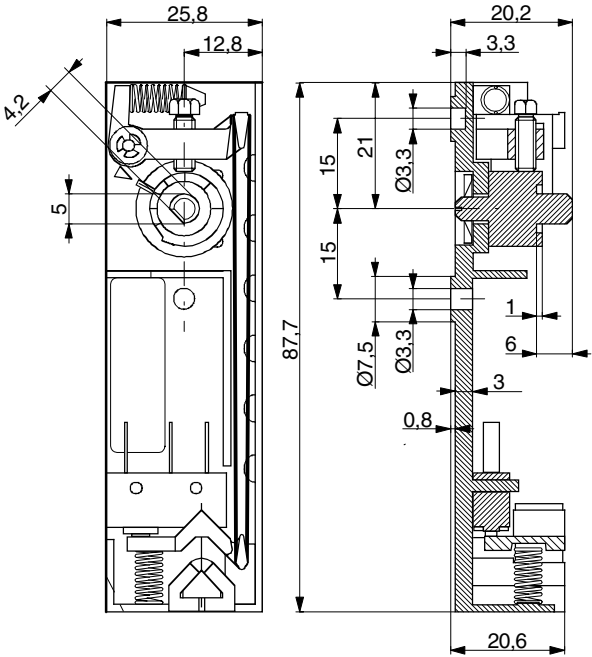


B04500b

Wiring diagram



Dimension drawing



M02468